


by **ECOSTEEL** Metal Systems

**Much
more
than a
Window.**

www.muchmorethanawindow.com | info@muchmorethanawindow.com



THE MAN BEHIND THE BRAND

“Ecosteel, (SA), is a company based surroundings Porto, with a leading position in the national and international market of the construction and metalworking sector through an aggregating offer of value and solutions, with the mission of being “ Much more than the Window ”.

Since its foundation in 2013, it has been managed by the entrepreneur José Maria Ferreira, whose professional career has over 30 years of experience in the construction sector. Ecosteel represents a case of success and unique growth, which is reflected in the increase of the initial work group of approximately 30 employees to the current 200 employees. Architects, mechanical and physical engineers, and 18 installation teams are part of the operating staff.

In 5 years, the MMTW Group represents an investment in the Amorim and Laúndos Industrial Zone of around 10M € and achieves a solid and reference position in the market through its strategy based on the combination of research, technology, industry and customized solutions which promote the highest design, comfort and safety requirements. Another differential is the search for the well-being of its work team, and a conscience and social responsibility, which is reflected not only in the conditions provided, but also in the support given to social causes and patronage in general - which extends from the support arts, humanitarian causes and even educational institutions in the country with merit awards.

The search for quality and added value in the daily life of the organization, associated with interdisciplinarity and support for the arts are a clear and differentiating example from the social and economic perspective.

Currently, it is part of a group of associated companies identified in the market under the brand name MMTW - Much More Than a Window, including Incons, a construction company with the oldest permit in Portugal.

In 2018, the consolidated turnover was 12M € and this year it is expected to reach 18 M €.

The market growth strategy is based on the constant improvement of the basic principles of the organization: quality, trust, innovation, technological development and the use of new materials in the construction and innovative solutions, systems, customization and new markets.

Ecosteel's main focus for next year is to approach markets in Latin America, Arab countries and Asia, these markets where it already operates and has completed works. Consolidating North African markets is also on the list of priorities for internationalization.

The company currently has a consolidation and internationalization project underway with an eligible investment of around 600,000€, and two innovation projects with an eligible investment of around 2,000,000€.

We highlight the PLUS SYSTEM is an internationally patented system, presenting aesthetically and technically superior, distinguishing itself from other similar systems in the market by the absence of any difference between the exterior and the interior, through the integration of the rim, profiles and gutter and horizontal rollers at zero q, and the innovative concealed locking system, which has no visible handle.

The special design of the profiles of this system also gives outstanding performance with regard to air and water permeability.

The FUSION SYSTEM is a system with no profile visible around the window perimeter. It is a system fully integrated in the finishing materials, which allows to integrate the window, as if it was fused with the building, making it a whole. The FUSION SYSTEM also incorporates a drainage system capable of channeling a large amount of rainwater even in extreme situations. This system has achieved exceptional leak testing results in the exceptional class E1650 (7 classes above class 9A) according to EN 12208 + ISO 1027.

Both systems have been recognized and awarded internationally with RED DOT AWARD - BEST PRODUCT DESIGN (2017), BATIMAT INOVATION AWARD (2017), and GERMAN DESIGN (2019).



project: **PALMARES OCEAN LIVING & GOLF**

Architecture: **RCR ARQUITECTES**

Location: **PORTUGAL**

Status: **ON GOING WORK**

Typology Category: **RESIDENTIAL**

Year: **2020**





renders by © KRONOS HOMES



renders by © KRONOS HOMES



renders by © KRONOS HOMES









project: **ONE LIVING**

Architecture: **FREDERICO VALSASSINA ARQUITECTOS**

Location: **PORTUGAL**

Status: **ON GOING WORK**

Typology Category: **RESIDENTIAL**

Year: **2018**







project: **CÉDRUS LIGET SZEGED**

architect: **BARA DESIGN STUDIO**

location: **HUNGARY**

status: **ON GOING WORK**

system used: **38 PLUS**

SQM of MMTW of products: **25.000m2**

typology category: **HOUSING**

year: **2017**





© MMTW PORTUGAL



© MMTW PORTUGAL



© MMTW PORTUGAL



© MMTW PORTUGAL



project: **MARECHAL 720**

architect: **CORREIA/RAGAZZI ARQUITECTOS**

location: **PORTUGAL**

status: **ON GOING WORK**

typology category: **HOUSING**

year: **2020**



© renders by 1825



© renders by 1825



© renders by 1825

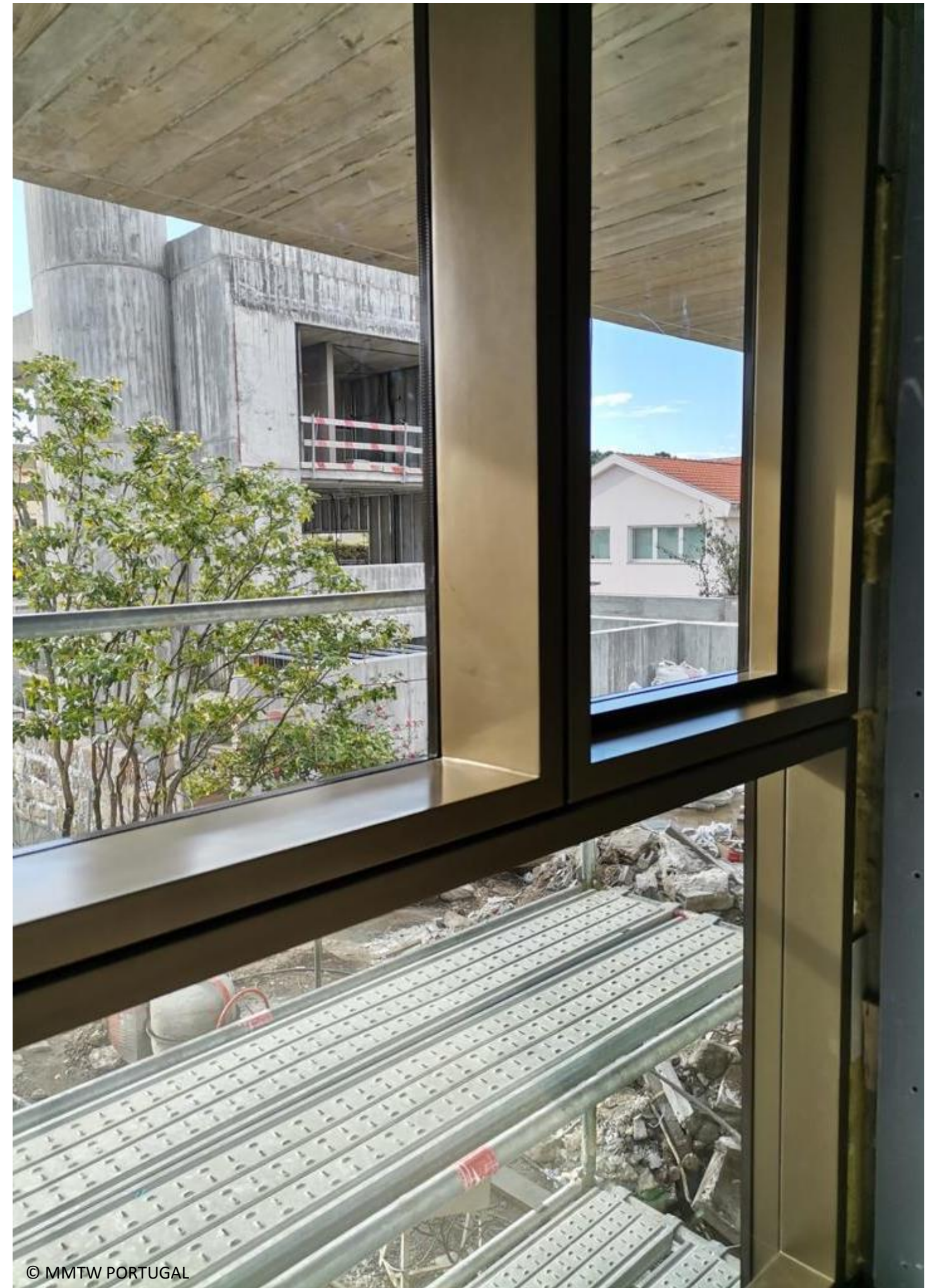


© renders by 1825

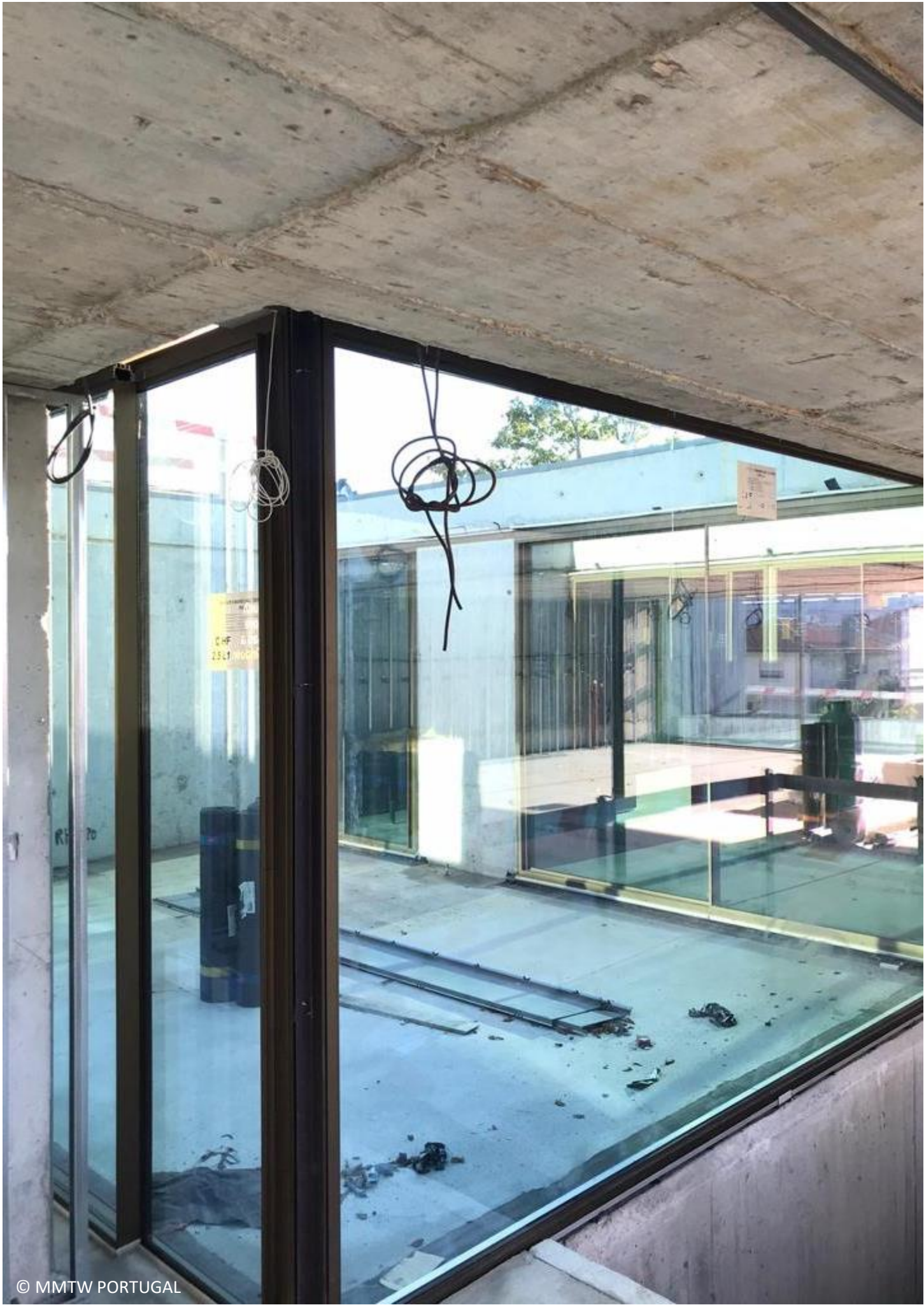




© MMTW PORTUGAL



© MMTW PORTUGAL





project: **L'INSTITUT DES CIVILISATIONS**

architect: **MOUSSAFIR ARCHITECTS**

location: **FRANCE**

status: **ON GOING WORK**

system used: **38 PLUS | 54 DRAIN | 54 CLASSIC | OPEN**

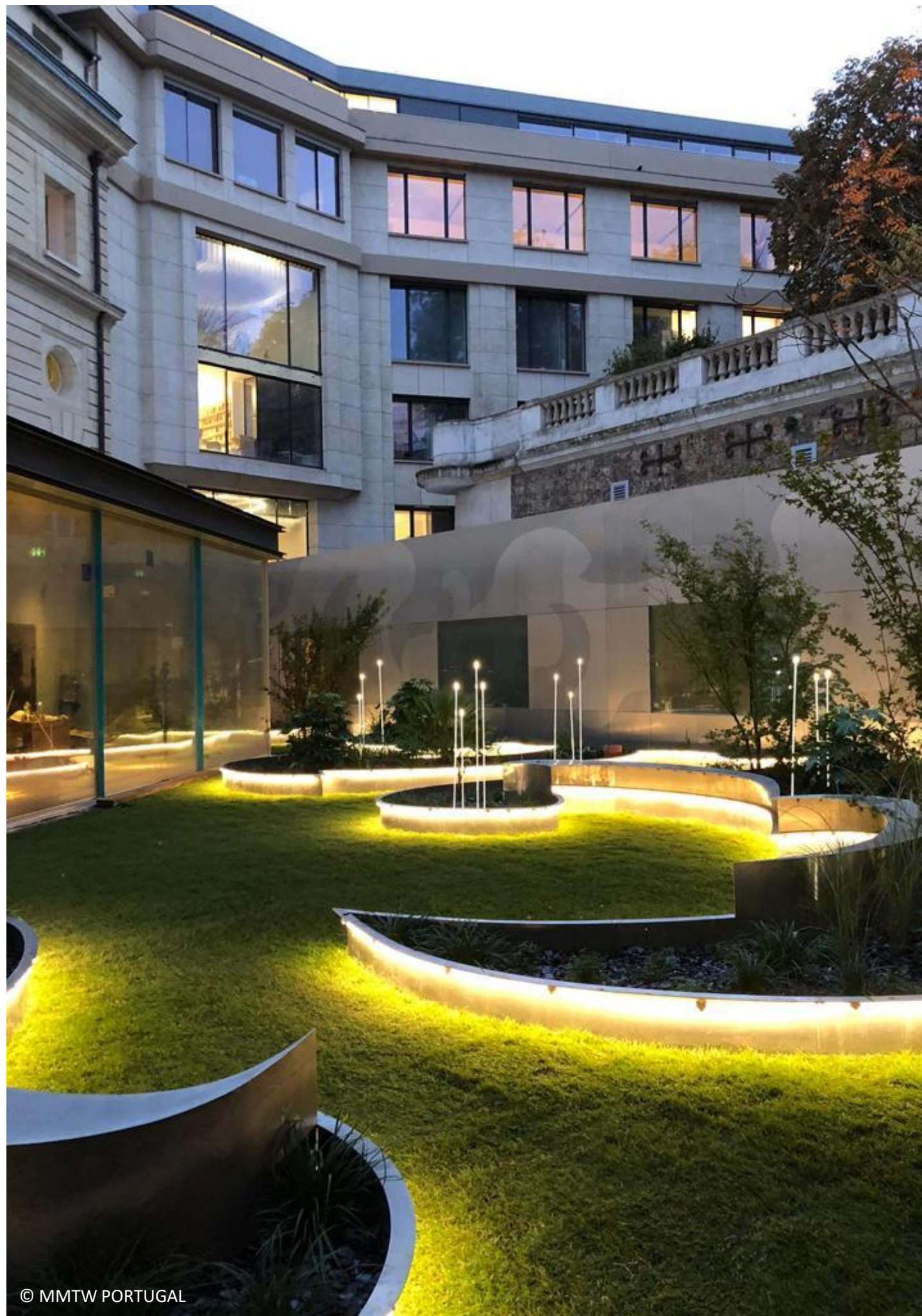
SQM of MMTW products: **1.000 m2**

typology Category: **CULTURAL**

year: **2015 - 2019**







© MMTW PORTUGAL



© MMTW PORTUGAL



© MMTW PORTUGAL



© MMTW PORTUGAL



© MMTW PORTUGAL



© MMTW PORTUGAL





© Bruno Lança



© Bruno Lança





project: **EDIFÍCIO OURO RESIDENCE**

architect: **APEL- GINESTAL MACHADO**

location: **PORTUGAL**

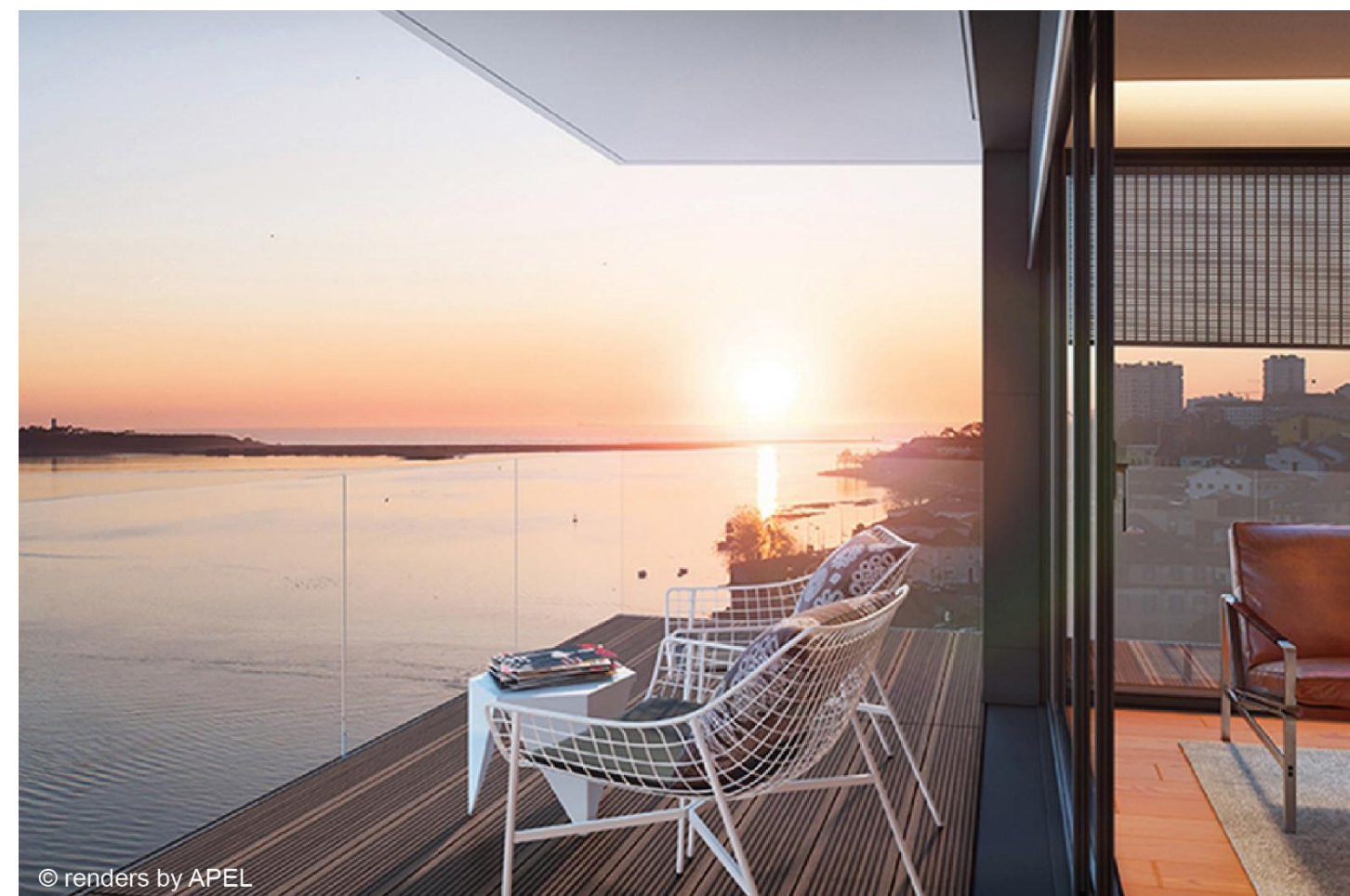
status: **ON GOING WORK**


system used: **38 PLUS | 38 OPEN**

SQM of MMTW products: **1.000 m2**

typology category: **HOUSING**

year: **2019**



A photograph of a modern residential building at dusk. The building features a grid of windows, some of which are illuminated from within, showing people inside. The ground floor has a large entrance area with a person standing near the door. A blue car is parked on the street to the right. The sky is a mix of blue and orange from the setting sun.

project: **EDIFÍCIO RESIDENCIAL RUA SOUSA AROSO**

architect: **PAULA SANTOS | ARQUITETURA**

location: **PORTUGAL**

status: **ON GOING WORK**

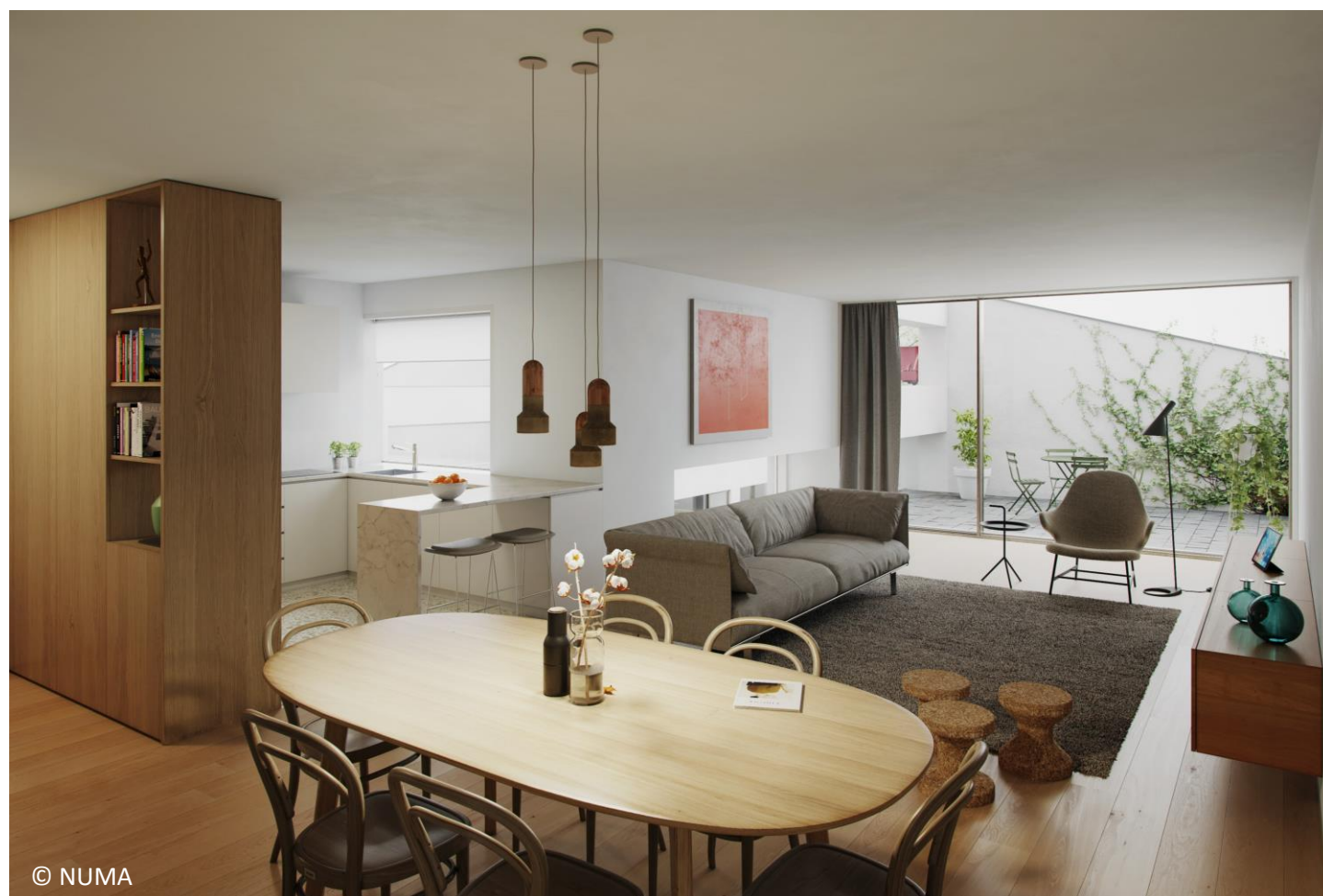
system used: **38 PLUS | LARGGLASS**


SQM of MMTW products: **530m2**

typology category: **RESIDENTIAL**

year: **2018**



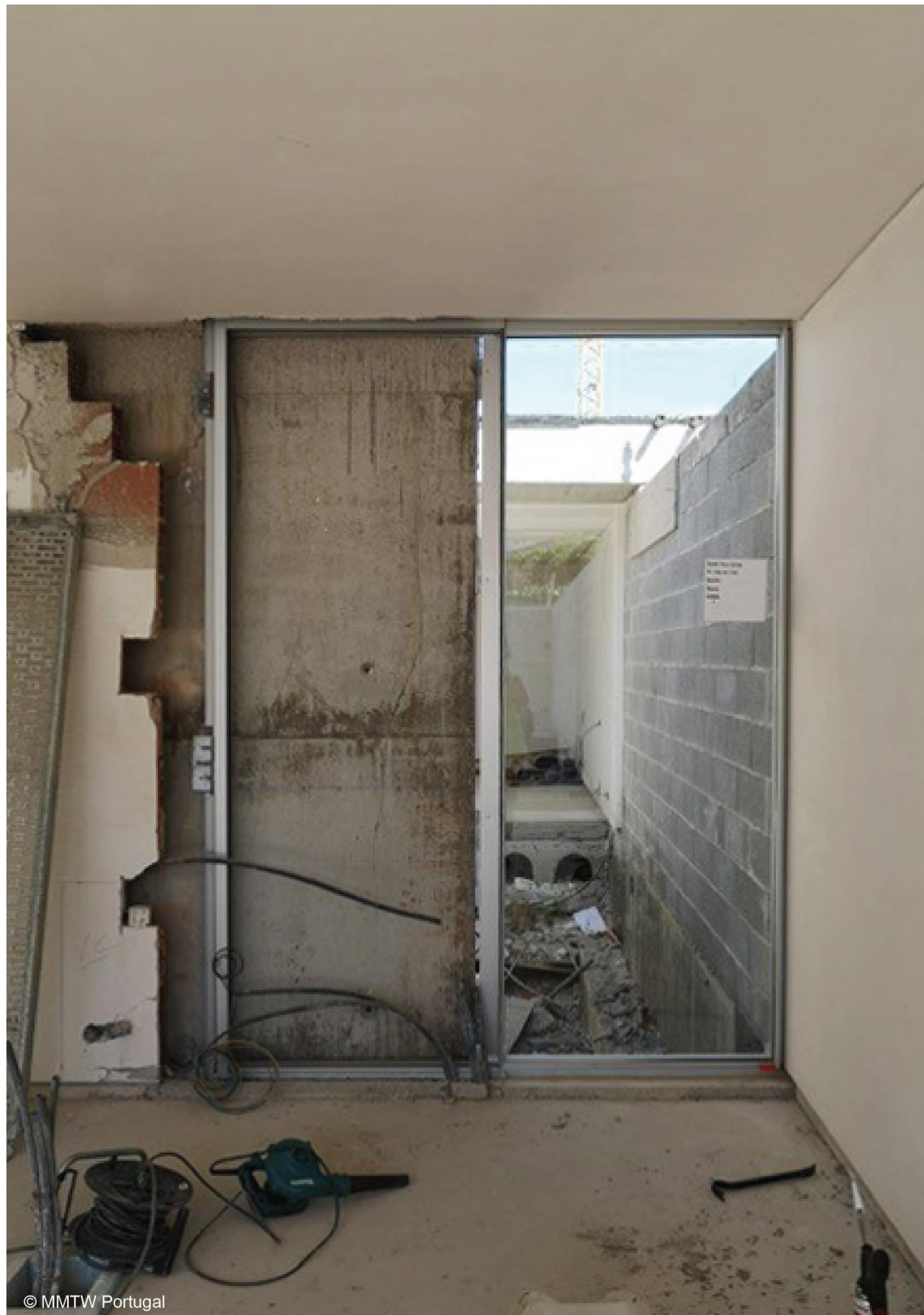




project: **QUINTA DO PAÇO LUMIAR**
architect: **EDUARDO SOUTO DE MOURA**
location: **PORTUGAL**
status: **ON GOING WORK**
system used: **38 PLUS**
SQM of MMTW products: **1.700m²**
typology category: **HOUSING**
year: **2018**







© MMTW Portugal



© Bruno Lança



project: **CASTILHO 203**

Client: **VANGUARD PROPERTIES**

Architecture: **design project by ARX PORTUGAL ARQUITECTOS**

Location: **PORTUGAL**

Status: **READY WORK**

System used: **38 PLUS | 54 CLASSIC**

SQM of MMTW products: **1.500 m2**

Typology Category: **HOUSING**

Year: **2018**





© Bruno Lança



© Bruno Lança



© Bruno Lança



© Bruno Lança



© Bruno Lança



© Bruno Lança

project: **EDIFÍCIO NÁUTICO**

architect: **SUBVERT STUDIO**

location: **PORTUGAL**

status: **READY WORK**

System used: **38 PLUS | OPEN**

SQM of MMTW products: **1.700m²**

typology category: **HOUSING**

year: **2018**







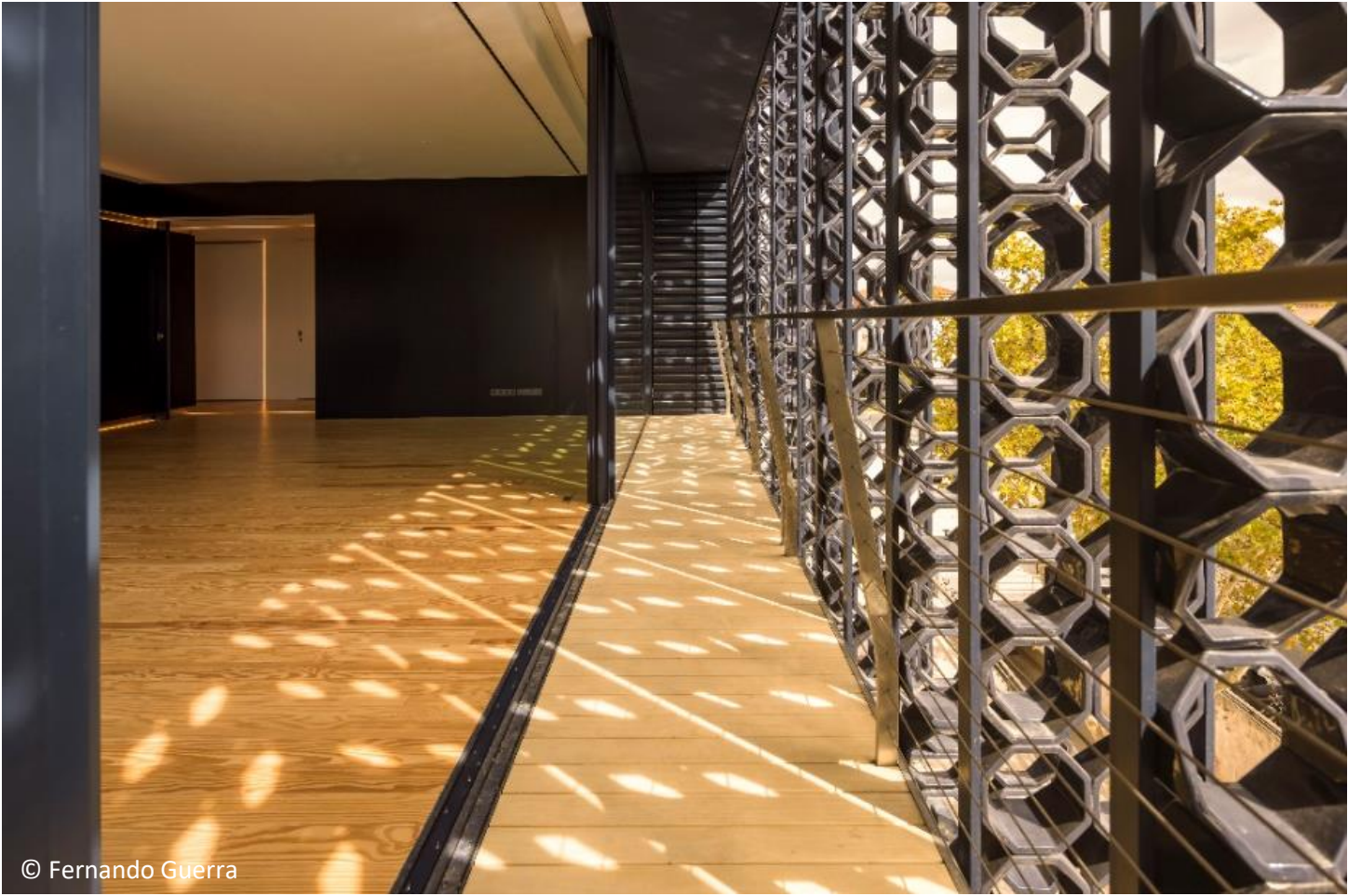
© Fernando Guerra



© Fernando Guerra



© Fernando Guerra



© Fernando Guerra



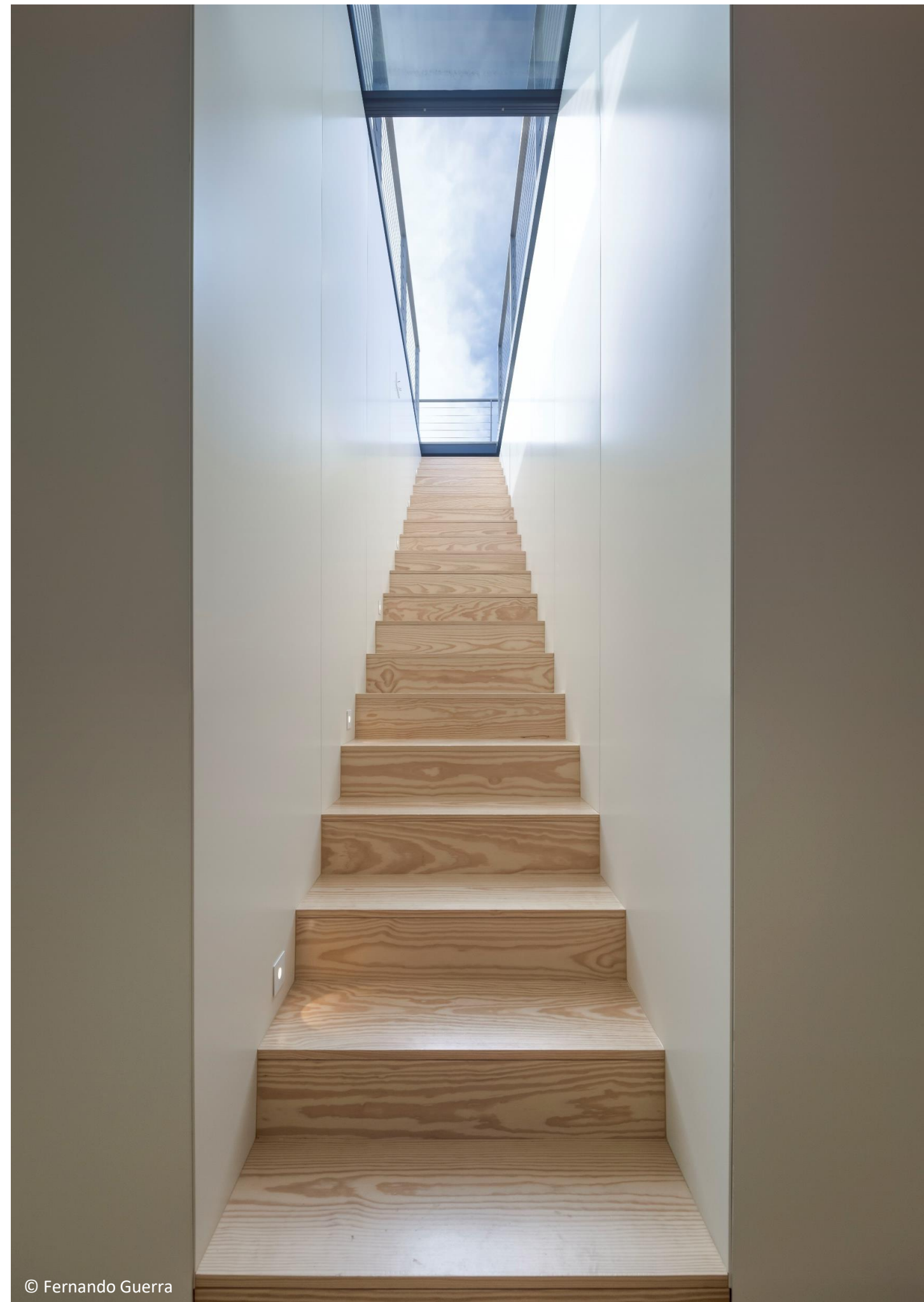
© Fernando Guerra



© Fernando Guerra



© Fernando Guerra



© Fernando Guerra

project: **WORLD OF WINE**
architect: **BROADWAY MALYAN**
location: **PORTUGAL**
status: **READY WORK**
system used: **38 PLUS**
typology category: **CULTURAL**
year: **2020**





© Bruno Lança



© Bruno Lança

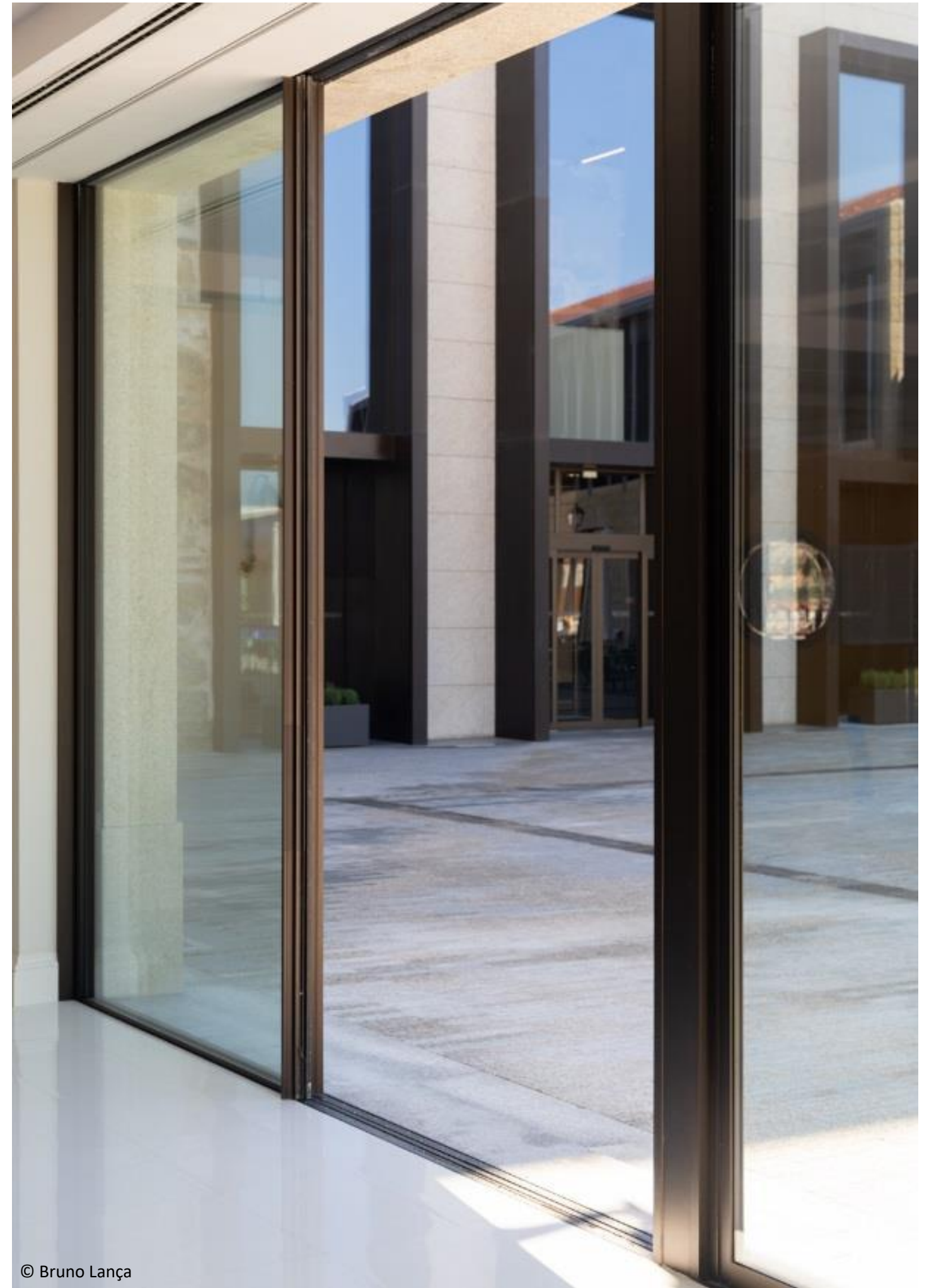


© Bruno Lança



© Bruno Lança





project: **DUNAS DOURADAS**
architect: **JUTTA HOEN**
location: **PORTUGAL**
status: **READY WORK**
typology category: **HOUSING**
year: **2020**





© Shaun Fisher



© Shaun Fisher



© BARA DESIGN STUDIO



© Shaun Fisher



© Shaun Fisher



© Shaun Fisher



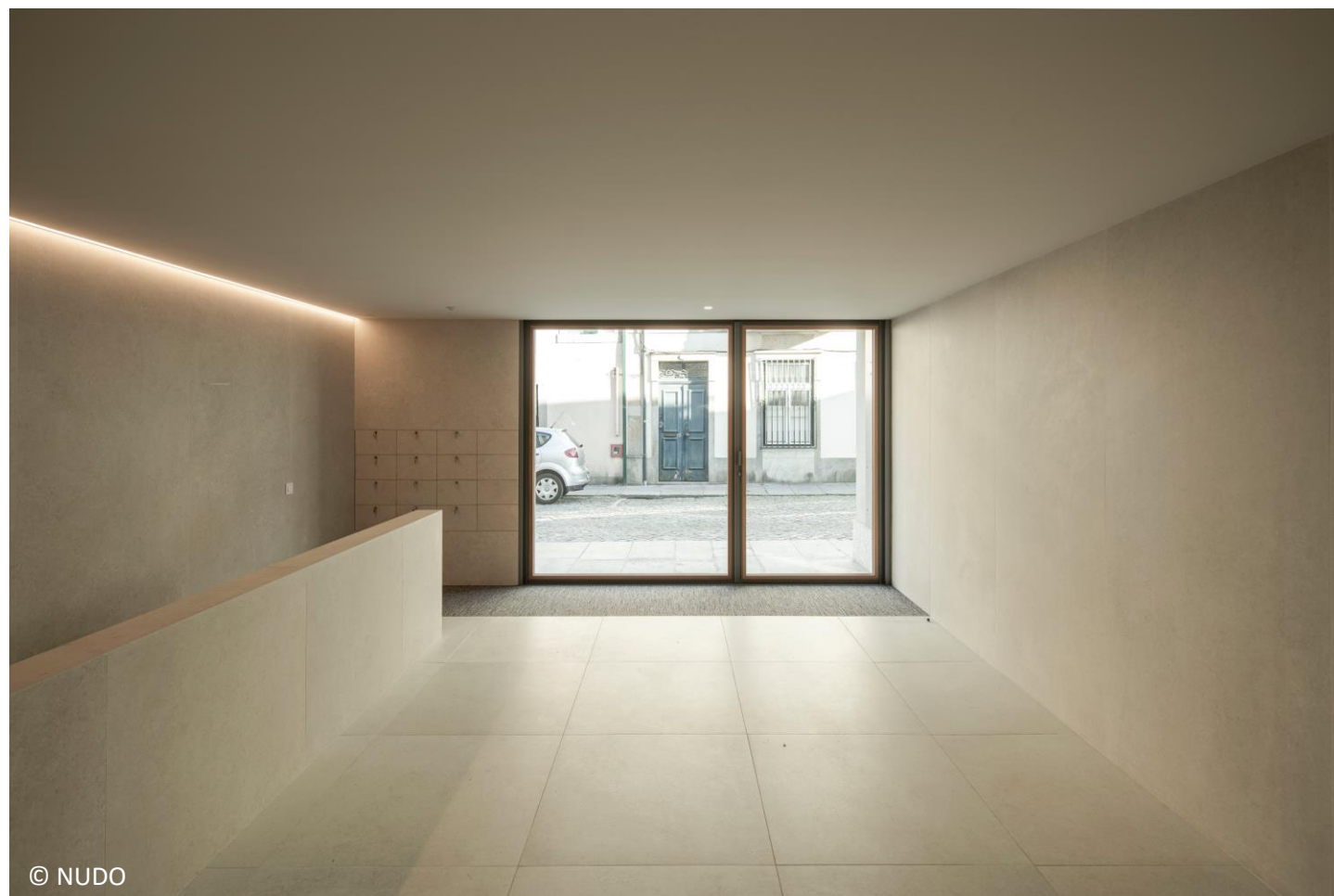
© Shaun Fisher



© Shaun Fisher



project: **CASAS ALCAIDE**
architect: **CARVALHO ARAÚJO**
location: **PORTUGAL**
status: **READY WORK**
system used: **FLEX**
typology category: **HOUSING**
year: **2020**



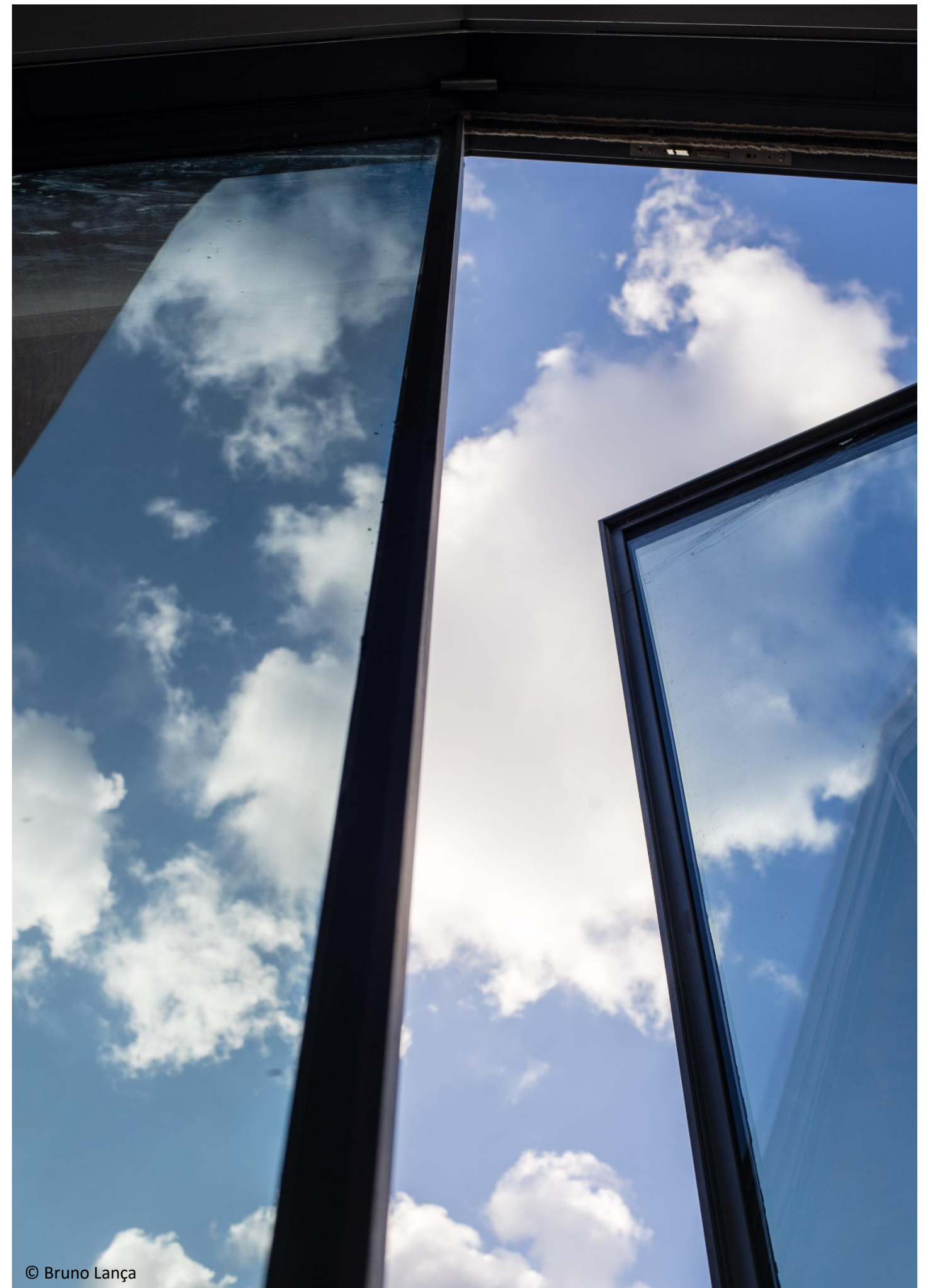
project: **ARMAZÉM JJ**
architect: **AIRES MATEUS**
location: **PORTUGAL**
status: **READY WORK**
system used: **HYBRID**
typology category: **HOUSING**
year: **2019**







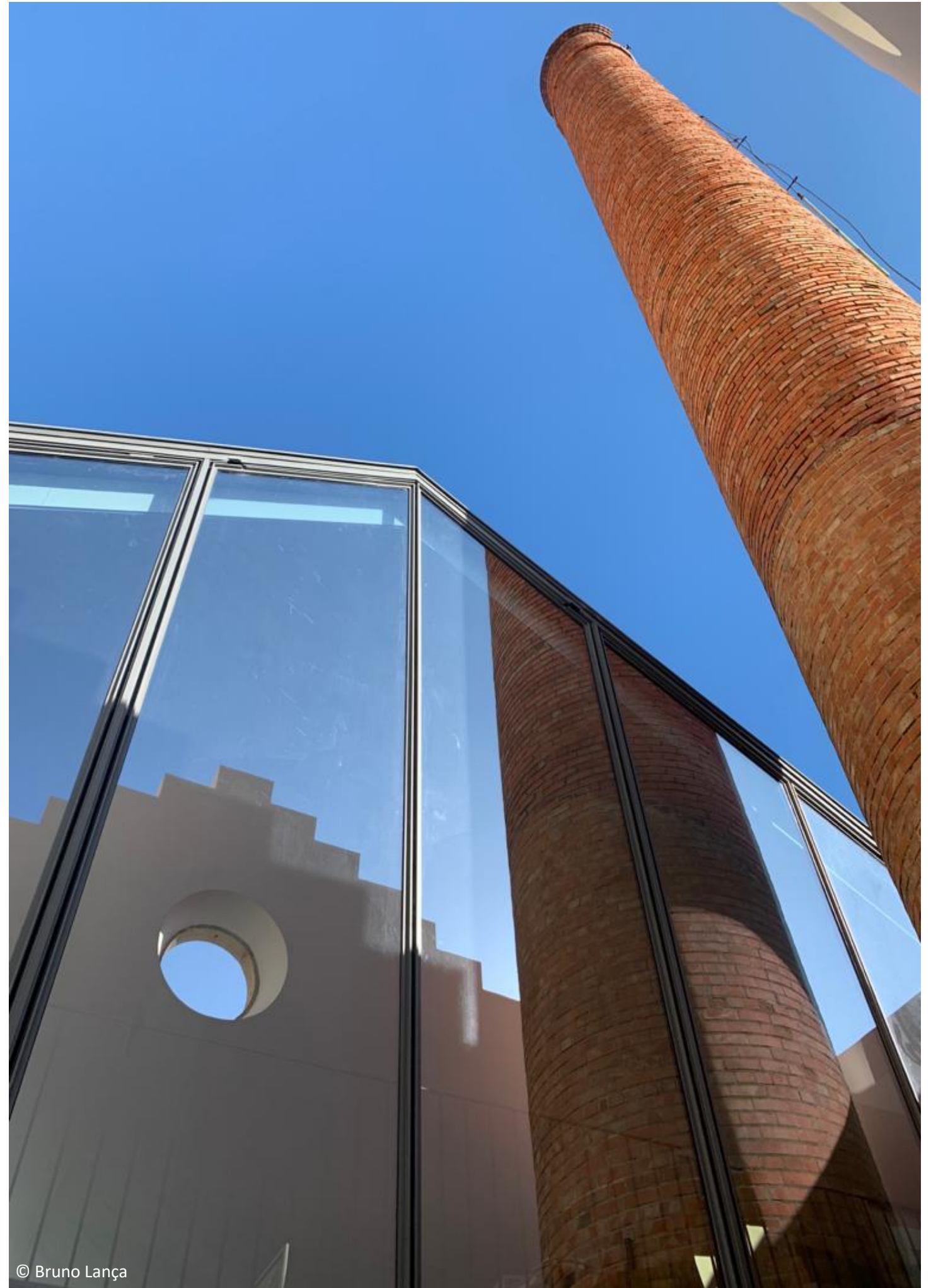
© Bruno Lança



© Bruno Lança



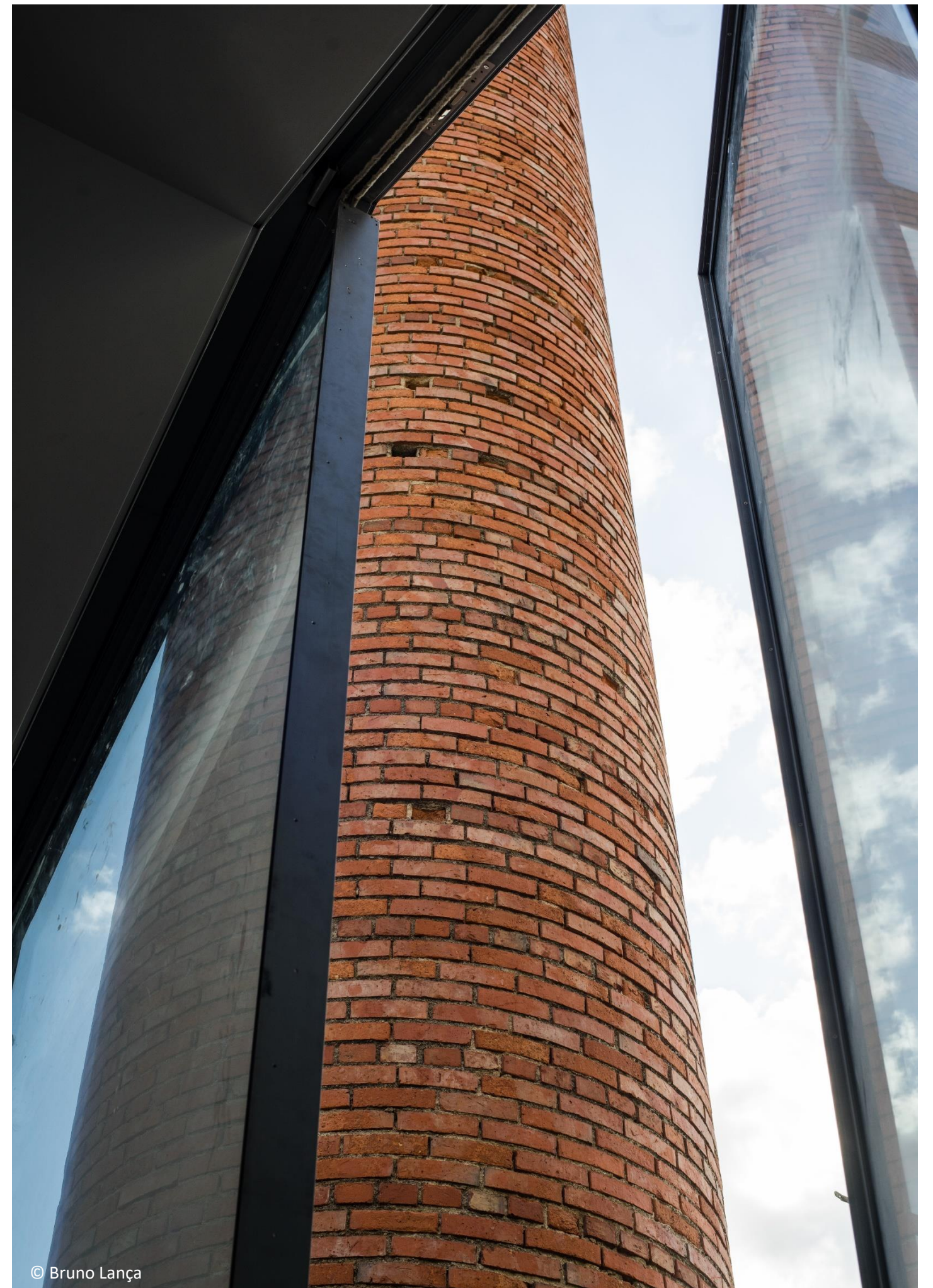
© Bruno Lança



© Bruno Lança



© Bruno Lança



© Bruno Lança

project: **RV 47**

architect: **ALEJANDRO VON WABERER**
MARIA OLIVER

location: **SPAIN**

status: **READY WORK**

system used: **38 PLUS | 54 PLUS | 38 DRAIN**

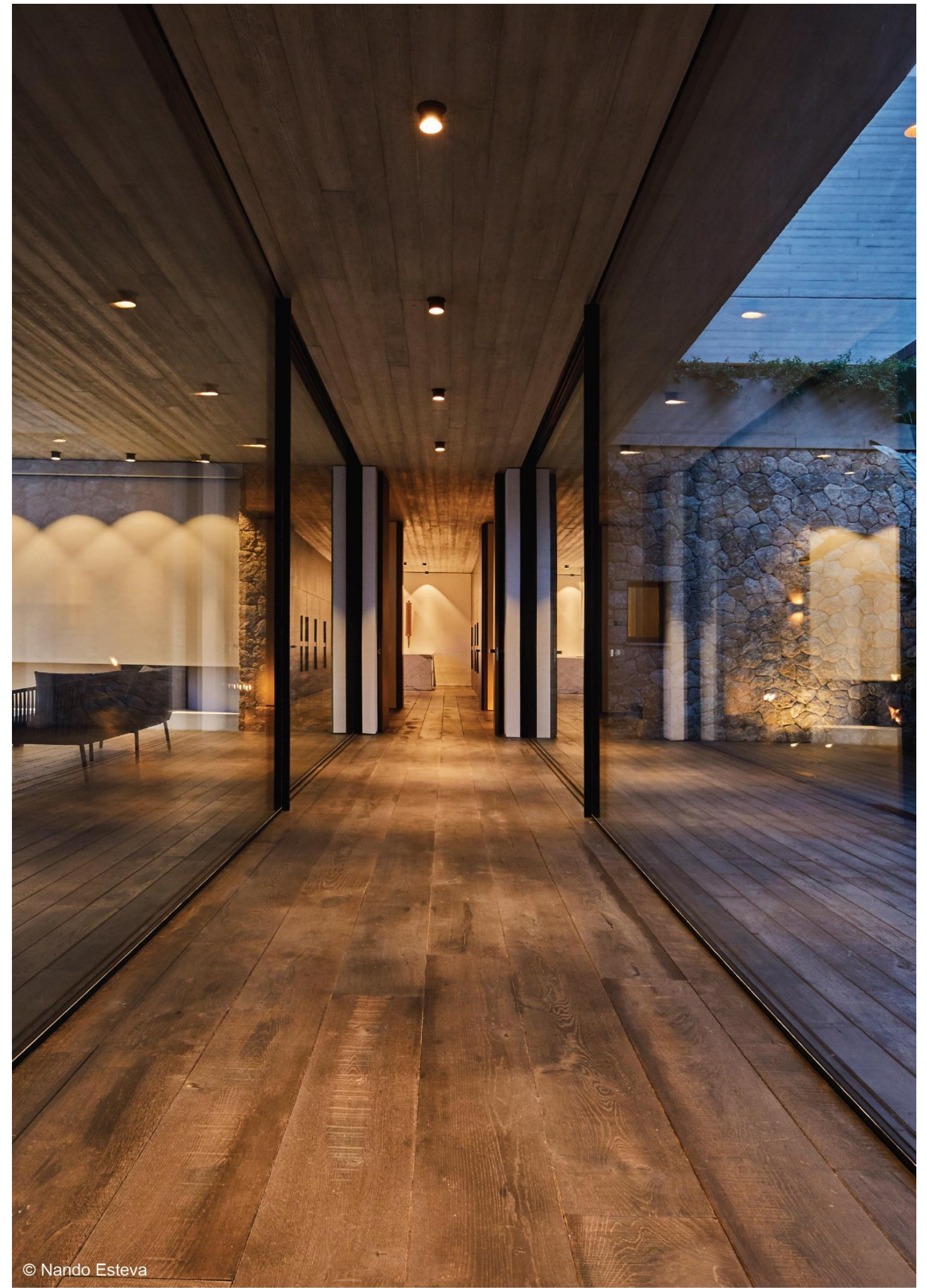
SQM of MMTW products: **340m2**

typology category: **RESIDENTIAL**

year: **2017**







project: **VILLA SI**

architect: **ATELIER STÉPHANE FERNANDEZ**

location: **FRANCE**

status: **READY WORK**

system used: **38 CLASSIC | 54 CLASSIC**

SQM of MMTW products: **499m2**

typology category: **RESIDENTIAL**

year: **2017**







© WE ARE CONTENTS



© WE ARE CONTENTS



© WE ARE CONTENTS



© WE ARE CONTENTS

project: **ARCHITECTURE FACULTY OF TOURNAI**

architect: **AIRES MATEUS**

location: **BELGIUM**

status: **READY WORK**

system used: **38 CLASSIC | OPEN**

SQM of MMTW products: **164m²**

typology category: **EDUCATIONAL**

year: **2017**



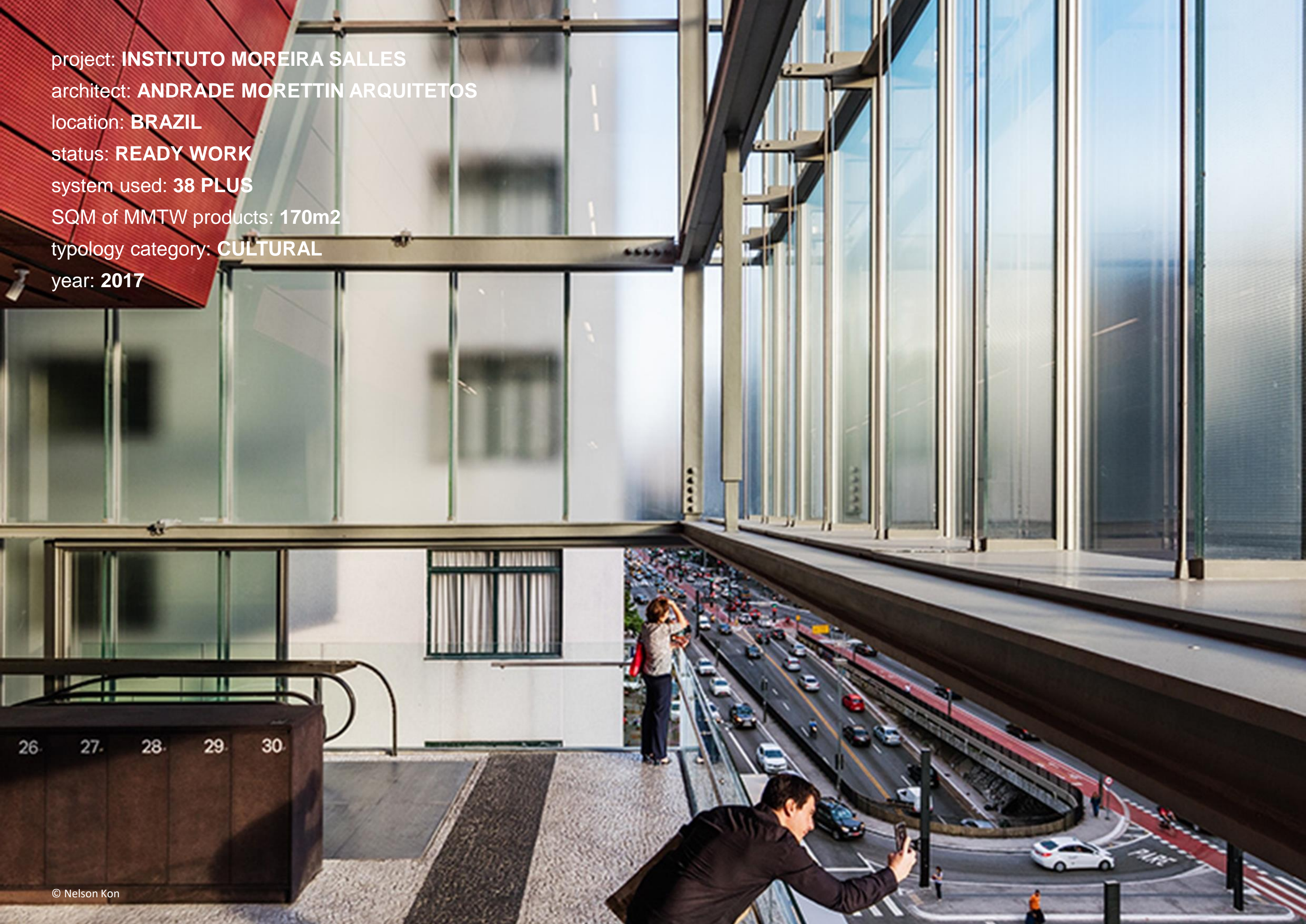


© Tim Van de Velde



© Tim Van de Velde

project: **INSTITUTO MOREIRA SALLES**
architect: **ANDRADE MORETTIN ARQUITETOS**
location: **BRAZIL**
status: **READY WORK**
system used: **38 PLUS**
SQM of MMTW products: **170m²**
typology category: **CULTURAL**
year: **2017**





© Nelson Kon



© Nelson Kon

project: **HOUSE IN GERÊS**

architect: **CARVALHO ARAÚJO ARQUITECTURA**

location: **PORTUGAL**

status: **READY WORK**

System used: **38 CLASSIC | 54 CLASSIC**

SQM of MMTW products: **145m2**

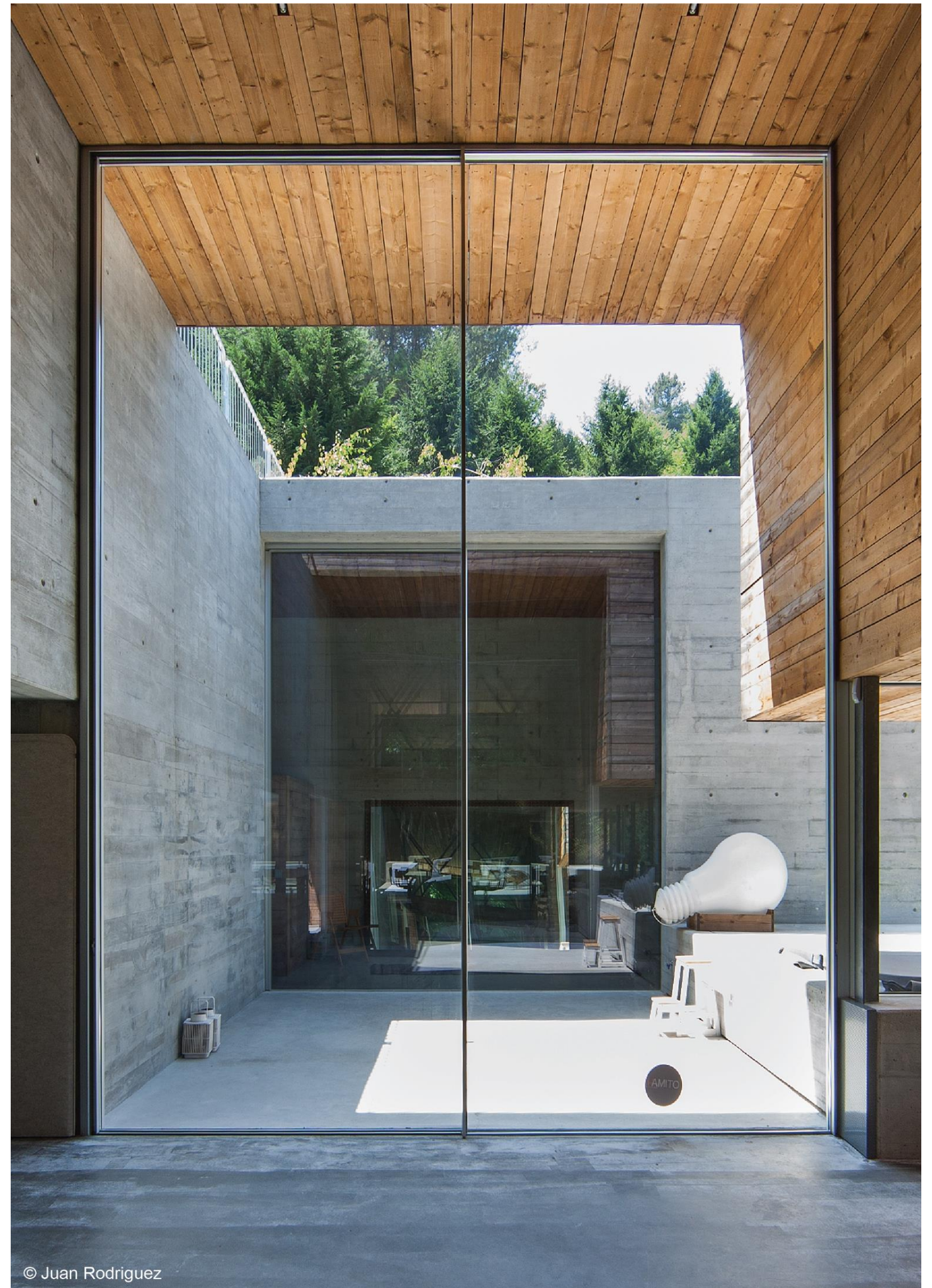
typology category: **RESIDENTIAL**

year: **2017**





© Juan Rodriguez



© Juan Rodriguez

Project: **HOUSE IN BOMBARDA**

Architect: **PAULA SANTOS | Arquitectura**

Location: **PORTUGAL**

Status: **READY WORK**

System used: **38 CLASSIC | OPEN**

SQM of MMTW products: **137m2**

Typology category: **Residential**

Year: **2016**






© Alberto Plácido



© Alberto Plácido



project: **VEYRIER-DU-LAC**
architect: **AAD BARONE**
H. DE GIOVANNINI
location: **FRANCE**
status: **READY WORK**
system used: **38 CLASSIC | 54 CLASSIC**
SQM of MMTW products: **483m2**
typology category: **RESIDENTIAL**
year: **2016**







© Courtesy of MMTW France partner FRAME SYSTEM



© Courtesy of MMTW France partner FRAME SYSTEM

project: **VERTBOIS**

architect: **MOUSSAFIR ARCHITECTS**

location: **FRANCE**

status: **READY WORK**

system used: **38 CLASSIC / PIVOT / OPEN**

SQM of MMTW products: **284 m2**

typology category: **MIXED USE**

year: **2016**



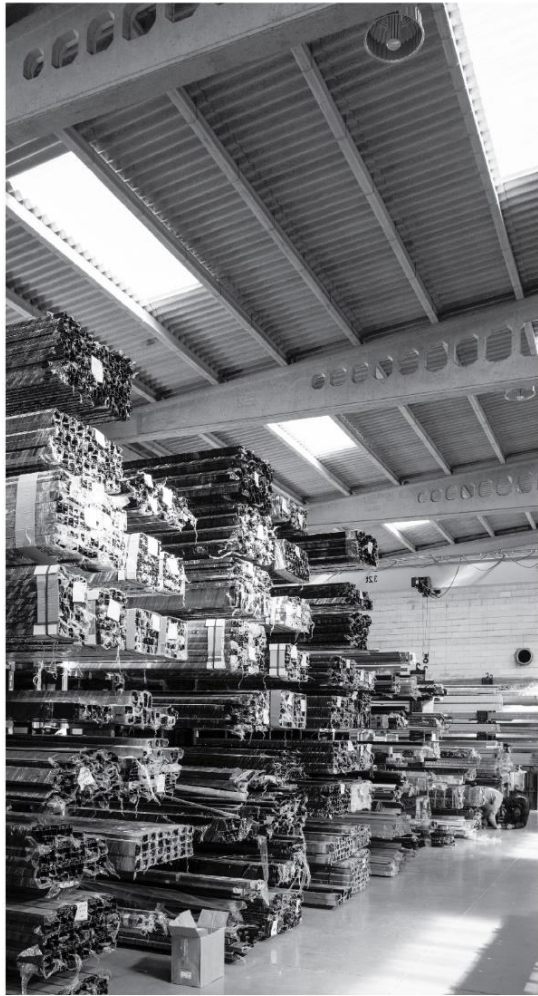
©Hervé Abbadie



©Hervé Abbadie

THE TEAM
BEHIND
THE BRAND





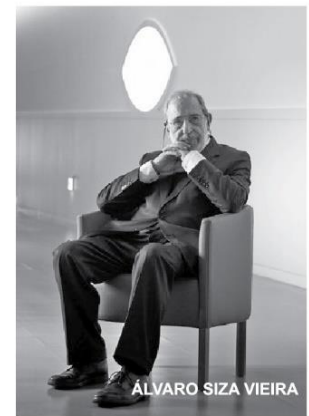
GLASS
BEHIND
THE BRAND



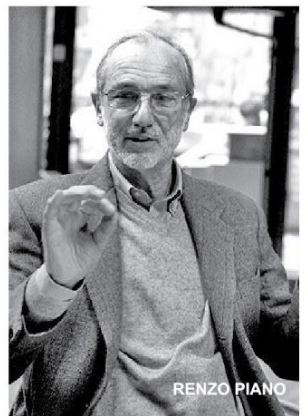
THE ARCHITECTS WE WORK WITH



AIRES MATEUS



ÁLVARO SIZA VIEIRA



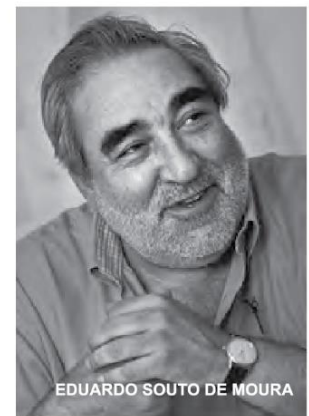
RENZO PIANO



PAULA SANTOS



PHILIPPE MEYER



EDUARDO SOUTO DE MOURA



DAVID ADJAYE



JEAN PIERRE PORCHER



VINCENT COSTE



CHARLES ZANA



JEAN NOUVEL



JACQUES M.



JOSÉ CARVALHO



RCR ARCHITECTES

GENERAL TECHNICAL ADVANTAGES

Much more than a Window is the perfect solution for your project, when the combination of quality, high technology and aesthetics are the main reasons for your choice.

By using self-supporting glasses, our systems push back architectural limits and offer the possibility to use glazed surfaces up to 36m² per pane.

From the floor to the ceiling, a 20mm vertical reinforced profile provides a minimal appearance, merging indoor and outdoor into one, with top quality guaranteed. The slim and elegant handle provides a streamlined appearance, which combined with a special rolling system, guarantees easy hand opening and maintenance of the panes. Optionally, for an even higher level of comfort, the system can be motorized and remote controlled.

Exceptional watertightness performances; air permeability and wind resistance.

Exceptional binding polyamides and high energy performance glasses assure a top thermal and acoustic efficiency and comfort feeling. Available in single, double and triple glass.

In combination with a safe toughened glass, the exclusive security lock system assures a high-quality level of security to the windows. Having a brand-new security system, we present you a hidden lock, an elegant solution unique on the market.

More than a Window offers a full and complete range of solutions according to each architecture

A technical team, especially dedicated to each market, is in charge of each project, accompanying and providing technical assistance, assembly and after-sales service.

Much more than a Window est la solution parfaite pour votre projet, lorsque qualité, haute technologie et esthétique sont les raisons principales qui guident votre choix.

Des surfaces vitrées de grande dimension nôtre système repousse les limites architecturales en proposant des surfaces vitrées pouvant atteindre 36m².

Profils extra fins, affleurement parfait Du sol au plafond, un profil renforcé de seulement 20mm sépare deux vantaux vitrés, pour une apparence minimale. Les poignées fines et élégantes, équipées d'un système de verrouillage invisible, offrent une apparence fuselée. Combinées avec le système de roulement inédit les fenêtres bénéficient d'un maintien parfait, ainsi que d'une ouverture manuelle sans effort.

Capacité d'étanchéité à l'eau exceptionnelle, perméabilité à l'air et résistance au vent.

Des joints en polyamide exclusifs combinés à des verres à haute performance énergétique assurent un rendement thermique et acoustique supérieur, et apportent un sentiment de confort. Disponible en simple, double et triple vitrage.

Combinées avec des verres trempés autoportants, le système exclusif de verrouillage offre à vos fenêtres un niveau de sécurité de haute qualité. Grâce à notre tout nouveau système de sécurité, nôtre produits vous offrent une solution de verrouillage exclusive sur le marché.

Much more than a Window offre une gamme complète de solutions qui s'accorderont à chaque projet et chaque besoin.

Une équipe technique composée d'architectes, d'ingénieurs et de chefs de projets est exclusivement dédiée au marché français, et assure le suivi de votre projet, l'assistance technique, l'installation et le service après-vente.



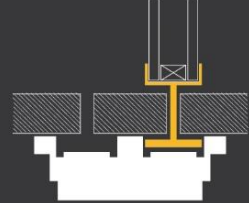
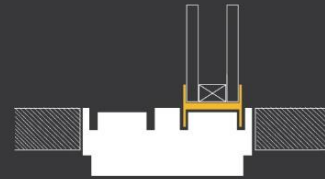
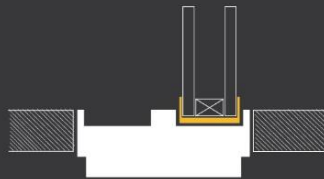
A 20mm vertical profile separates the glazed panes

Sliding glazed surface up to 36 Sq m (12x3)
Toughened glass system that allows a superior resistance.

Optimal security provided by a multipoint lock system.

Flush frame perfectly leveled to the finish materials through the whole periphery for a perfect visual continuity between interior and exterior

GENERAL TECHNICAL INFORMATION



CLASSIC

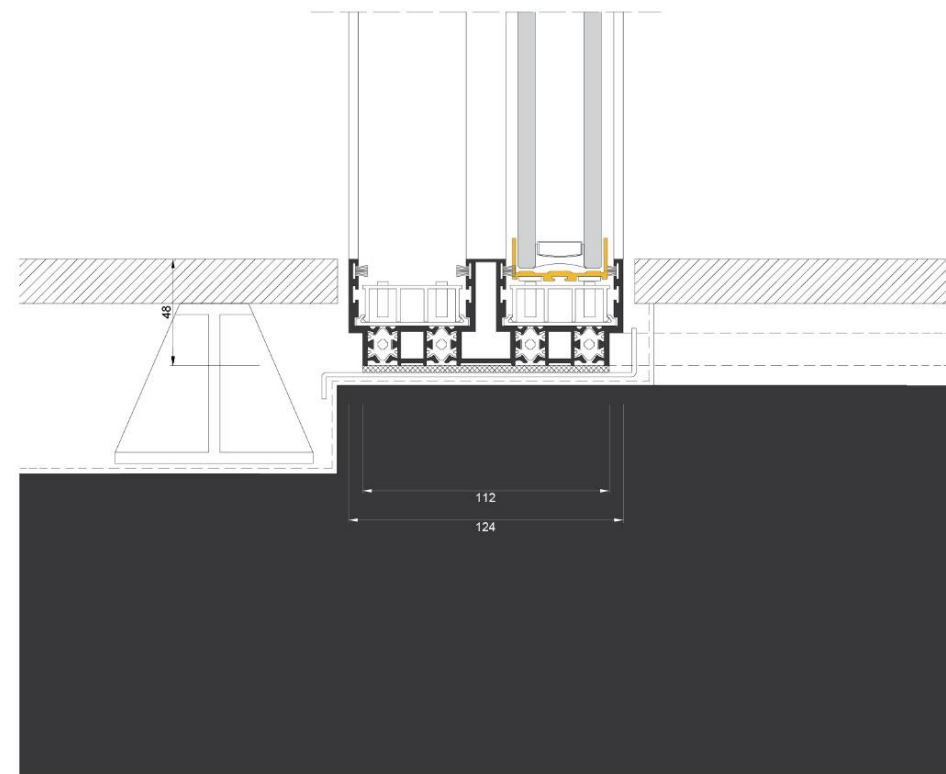
Standard sliding system, with excellent performance levels in watertightness, air permeability, resistance to wind loads and also thermal insulation.

The system uses a toughened glass that allows an optimized resistance, with surfaces up to 18m² per glazed pane.

Vertical profiles with only 20mm thickness prepared for a superior thermal, water and air permeability performances.

Exclusive sliding system with vertical double rollers, for a smooth hand opening with no effort needed.

 Watertightness ISO EN 12208 + ISO EN 1027	8A (450 Pa or 95 Km/h)
 Air Permeability ISO EN 12207 + ISO EN 1026	Class 3 (600 Pa or 110Km/h)
 Wind Resistance ISO EN 12210 + ISO EN 12211	Class C5 (2 00 Pa or Km/h)
 Impact Resistance ISO EN 12600 + ISO EN 1630	Class 5 (In 6 possible classes)
 Acoustic Insulation ISO EN 10140 + ISO EN 717	Rw: 38 db
 Security ISO EN 1627	RC2:(WK2)
 Thermal transmittance Uw	Calculation module 4.60 x 3.00 ISO EN 10077-1 + ISO EN 10077-2 (up to) up to Uw 1.0 W/ m ² K Ug = 0.7



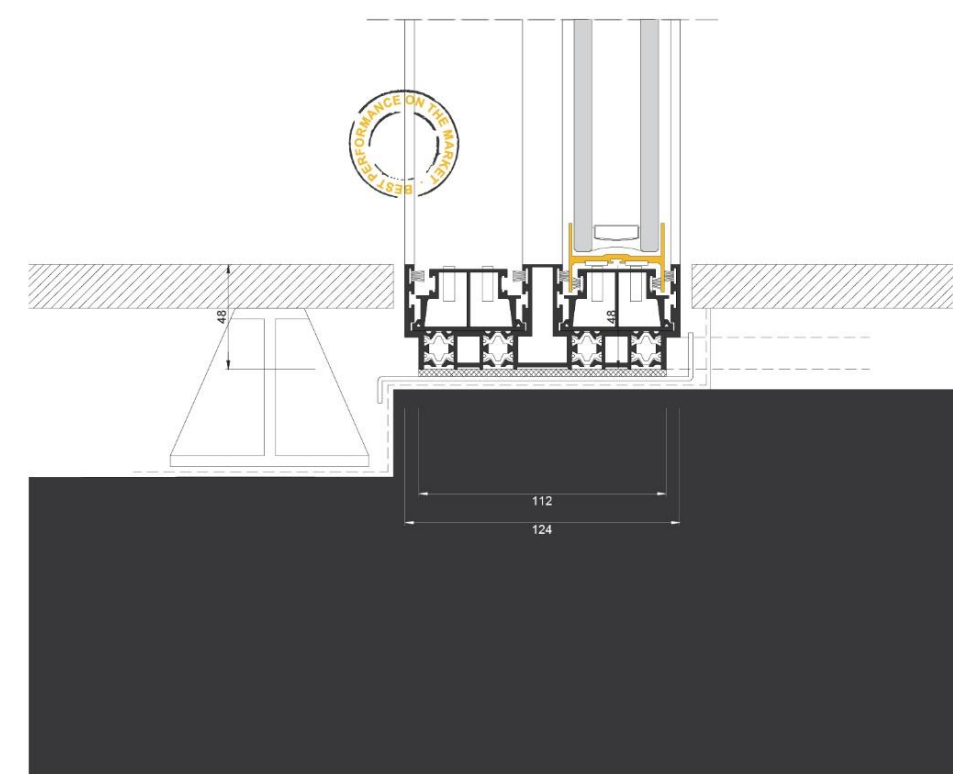
PLUS

PLUS is an exclusive minimal window system, characterized by an innovative system (bottom and top position), with all the rim profiles perfectly flushed to the construction materials. It offers an outstanding performance in water tightness, air permeability and resistance to wind loads.

PLUS is also equipped with an exclusive anti-freeze system (bottom position), which is optional.

PLUS has a hidden high security lock on the handle position. A slim and elegant handle equipped with a hidden lock system, provides the window a streamlined appearance, leading to the limit the minimal essence, allowing also an improved level of security, combined with an intuitive and simple user experience.

 Watertightness ISO EN 12208 + ISO EN 1027	E1050 (3 classes above 9A)
 Air Permeability ISO EN 12207 + ISO EN 1026	Class 4 (600 Pa or 110Km/h)
 Wind Resistance ISO EN 12210 + ISO EN 12211	Class C5 (2000 Pa or 200 Km/h)
 Impact Resistance ISO EN 12600 + ISO EN 1630	Class 5 (In 6 possible classes)
 Acoustic Insulation ISO EN 10140 + ISO EN 717	Rw: 42db
 Security ISO EN 1627	RC2:(WK2)
 Thermal transmittance Uw	Calculation module 4.60 x 3.00 ISO EN 10077-1 + ISO EN 10077-2 (up to) up to Uw 1.0 W/ m ² K Ug = 0.7



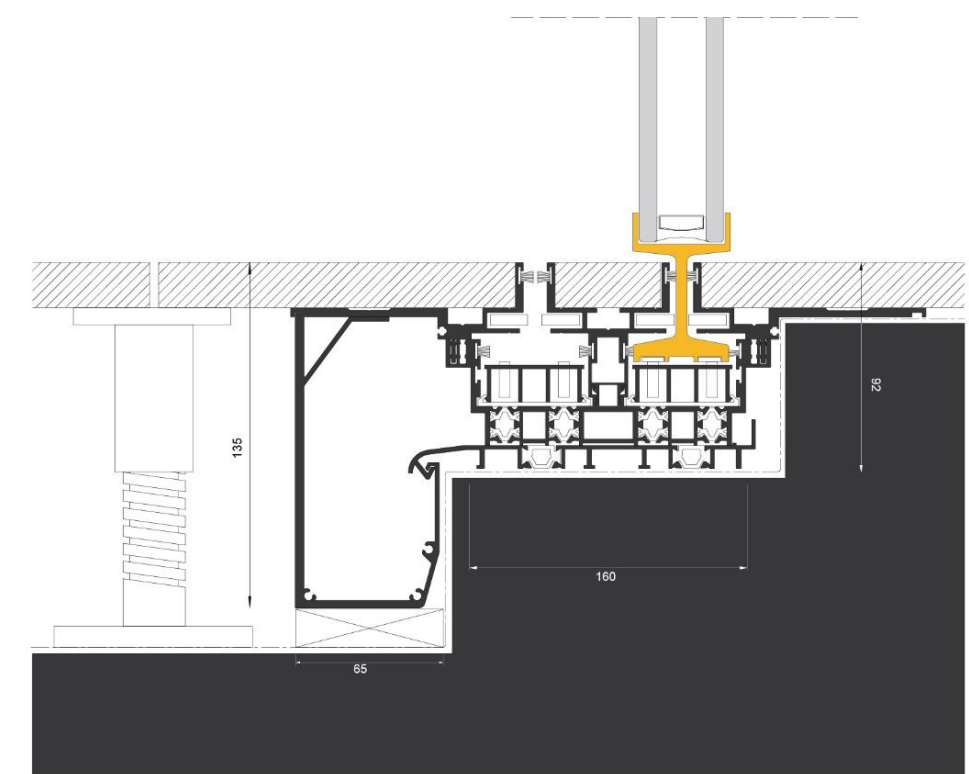
FUSION 1.0

FUSION offers you a system which is completely built into the finished materials, as if the window had merged with the building to become a single entity. **FUSION** system incorporates rim profiles with reinforced binding polyamides and toughened glass, providing better thermal and structural performance. **FUSION** system is innovative, and is the only existing system which is completely built-in on all four sides of the frame, allowing the perfect fusion and continuity between interior and exterior space.

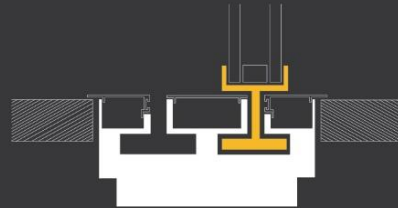
In addition, the **FUSION** system incorporates a gutter capable of channeling a large amount of rainwater even in extreme situations.

This system has achieved exceptional results on leakage tests, with an e1650 class exceptional, (7 classes above class 9a) according to en 12208 + iso en 1027.

 Watertightness ISO EN 12208 + ISO EN 1027	E1650 (7 classes above 9A)
 Air Permeability ISO EN 12207 + ISO EN 1026	Class 4 (600 Pa or 110Km/h)
 Wind Resistance ISO EN 12210 + ISO EN 12211	Class C5 (2000 Pa or 200 Km/h)
 Impact Resistance ISO EN 12600 + ISO EN 1630	Class 5 (In 6 possible classes)
 Acoustic Insulation ISO EN 10140 + ISO EN 717	Rw: 42db
 Security ISO EN 1627	RC2:(WK2)
 Thermal transmittance Uw	Calculation module 4.60 x 3.00 ISO EN 10077-1 + ISO EN 10077-2 (up to) up to Uw 1.0 W/ m ² K Ug = 0.7







GENERAL TECHNICAL INFORMATION

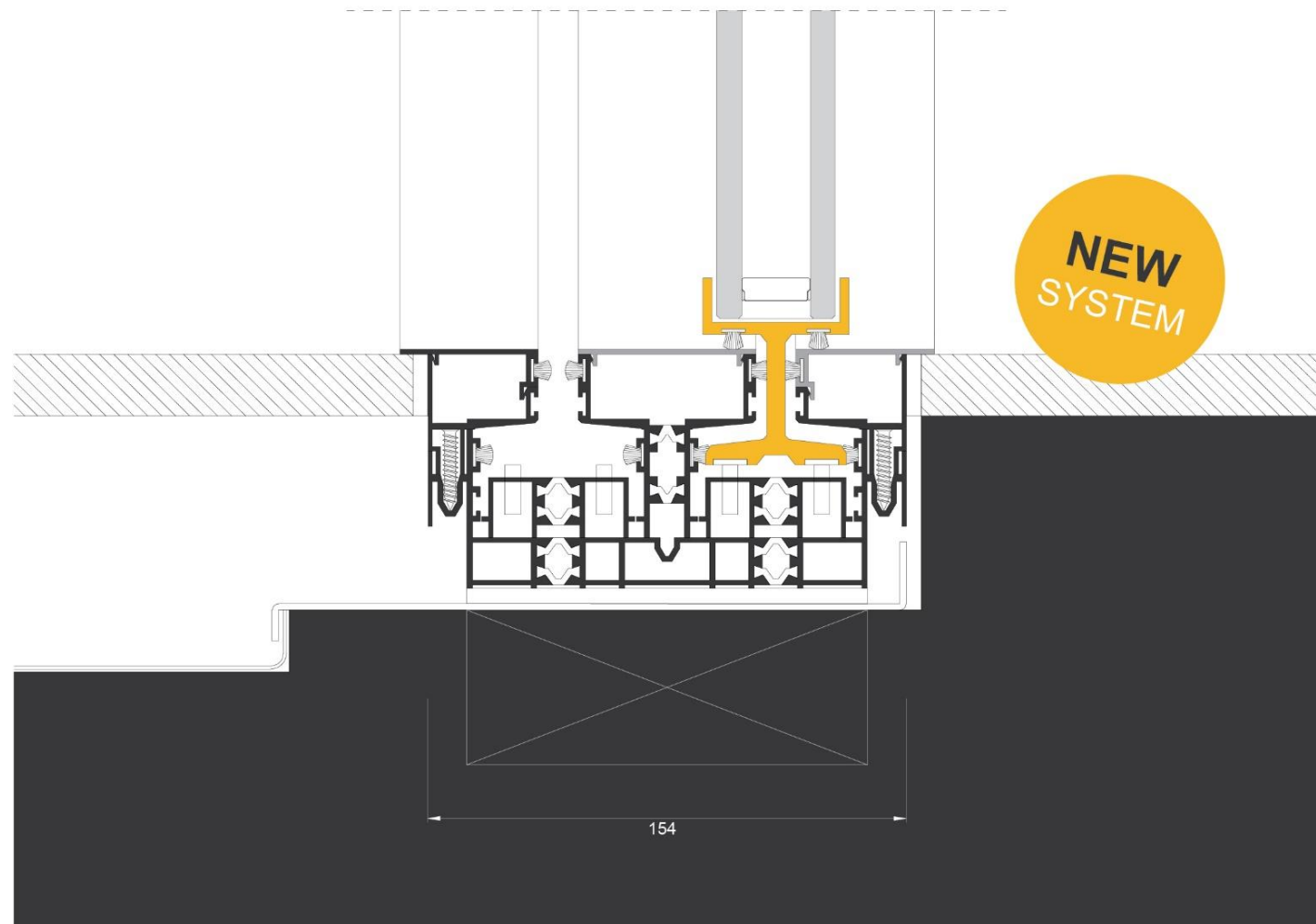


FUSION 2.0

FUSION 2.0 is the new minimalist sliding window system from OTIIMA, Much more than a Window, that merge function, performance and maintenance in an innovative and exceptional way, combining the best thermal, acoustic and permeability performances according to air and water tightness, superior design that blends and perfectly integrates the building, and a unique maintenance caracter, which simplicity like the replacement of the final finishing caps at any time during the life of the building, during or after construction, can be even done by the final user.

At the same time, the system still allows it perimeter cavities below the removable finishing caps, to be transformed into technical spaces for different uses, from mechanical fixings to thermal probes for heating, insulation, lighting, and drainage sensors.

	Watertightness ISO EN 12208 + ISO EN 1027	E1650 (7 classes above 9A)
	Air Permeability ISO EN 12207 + ISO EN 1026	Class 4 (600 Pa or 110Km/h)
	Wind Resistance ISO EN 12210 + ISO EN 12211	Class C5 (1200 Pa or 155 Km/h)
	Impact Resistance ISO EN 12600 + ISO EN 1630	Class 5 (In 6 possible classes)
	Acoustic Insulation ISO EN 10140 + ISO EN 717	Rw:42db
	Security ISO EN 1627	RC2:(WK2)
	Thermal transmittance Uw Ug = 0.7	Calculation module 4.60 x 3.00 ISO EN 10077-1 + ISO EN 10077-2 (up to up to Uw 1.0 W/ m² K










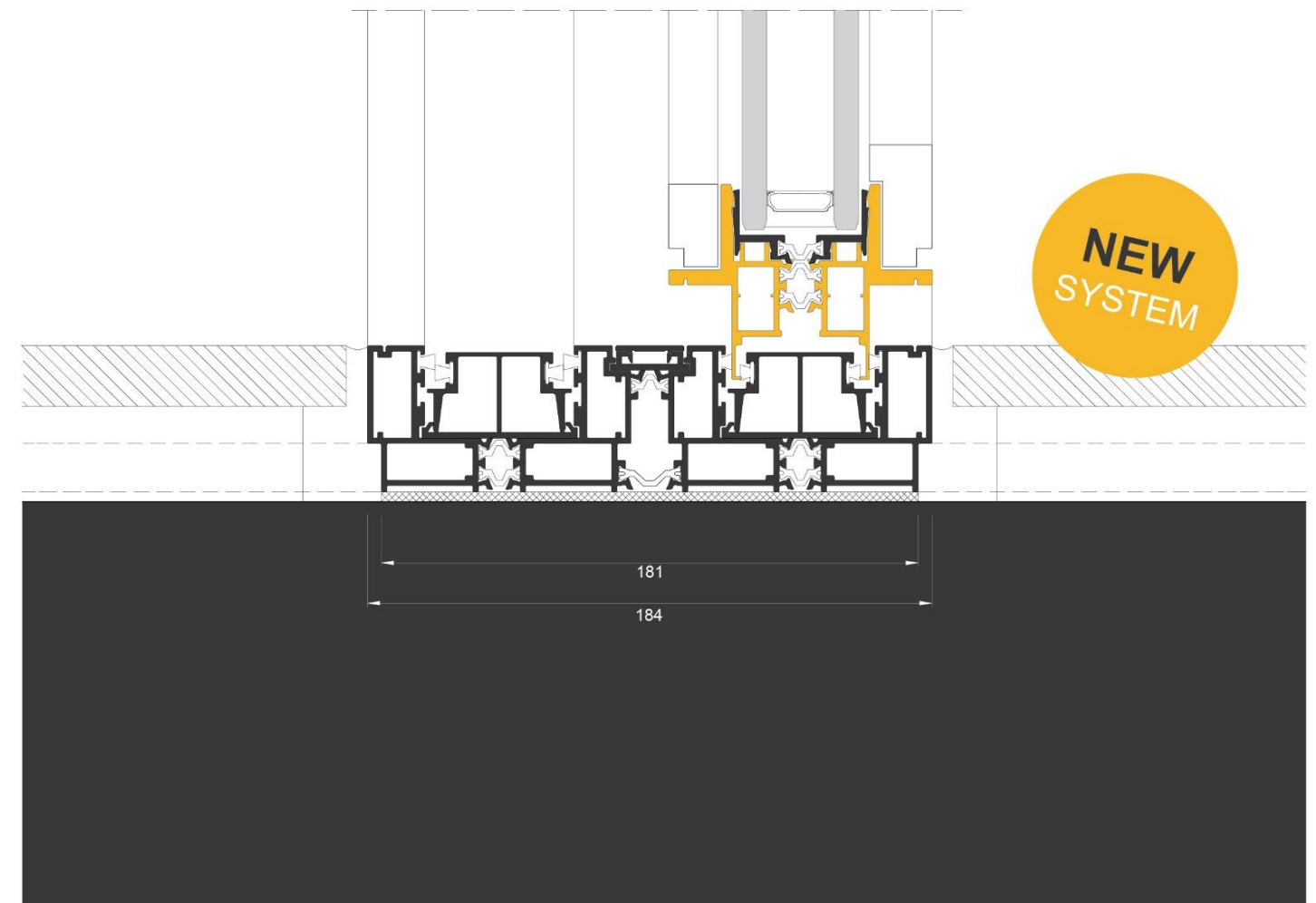
FLEX by CA

FLEX frame is an architectural glazing product, that combines the highest technical performance of today's most demanding standards in the construction market, with the elegance and delicacy of minimalist steel and wood frames hand-made by metal workers, with the additional advantage of solving a diversified range of typologies and solutions in a unique integrated and consistent visual language of the various frames, merging the entire solution in the construction with the purest and simplest appearance.

FLEX frame optionally allows the integration of a wooden decorative sub-frame, which can take on various dimensional and expressions, enhancing the window and making it an integral element of the architectural composition.

"Sometimes we want to merge the window in the building to a minimal expression. Sometimes we want to have a visual framing, a window enhancement as a composition element. Other times we want both expressions to value a particular composition." CA

	Watertightness ISO EN 12208 + ISO EN 1027	E 950 (2 classes above 9A)
	Air Permeability ISO EN 12207 + ISO EN 1026	Class 3 (600 Pa or 110Km/h)
	Wind Resistance ISO EN 12210 + ISO EN 12211	Class 3 (1200 Pa or 155 Km/h)
	Impact Resistance ISO EN 12600 + ISO EN 1630	Class 5 (In 6 possible classes)
	Acoustic Insulation ISO EN 10140 + ISO EN 717	Rw:42db
	Security ISO EN 1627	RC2:(WK2)
	Thermal transmittance Uw Ug = 0.7	Calculation module 4.60 x 3.00 ISO EN 10077-1 + ISO EN 10077-2 (up to up to Uw 1.2 W/ m² K



PLUS system

38 PLUS received the distinction "Red Dot". A result of the cooperation between MMTW and AMIITO-TECH that created an outstanding design that the expert committee for the Red Dot Award: Product Design 2017 has recognised with the internationally sought-after seal of quality. 38 PLUS is an exclusive minimal window system, characterized by an INNOVATIVE SLIDING SYSTEM (BOTTOM AND TOP POSITION), with all the rim profiles perfectly flushed to the construction materials.

This system provides to the glazed panels a superior stability by using vertical and horizontal bearings, offering also an outstanding performance in water tightness, air permeability and resistance to wind loads. 38 PLUS is also equipped with an exclusive ANTI-FREEZE SYSTEM (BOTTOM POSITION).

This innovative hidden system provides the anti-condensation process on the glass panels. This system also potentiates the defrosting of any ice formations inside windows gutter system, providing improved water drainage, even under extreme weather conditions.

38 PLUS has a HIDDEN HIGH SECURITY LOCK (HANDLE POSITION).

A slim and elegant handle equipped with a hidden lock system, provides the window a streamlined appearance, leading to the limit the minimal essence, allowing also an improved level of security, combined with an intuitive and simple user experience.

38 PLUS a reçu la distinction "Red Dot". Résultant de la coopération entre MMTW et AMIITO-TECH qui a créé un design exceptionnel que le comité d'experts du Red Dot Award: Product Design 2017 a reconnu avec le label de qualité internationalement recherché.

38 PLUS est un système exclusif de fenêtre minimaliste, caractérisé par un système de glissement innovant (fond et position haut), avec tous les profils de jante parfaitement rincés aux matériaux de construction.

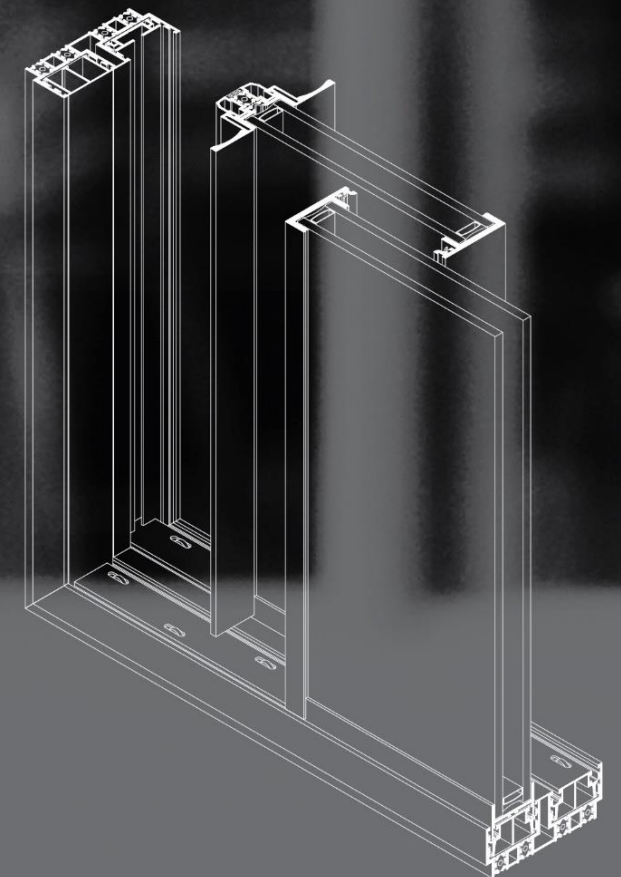
Ce système fournit aux panneaux vitrés une stabilité supérieure en utilisant des paliers verticaux et horizontaux, offrant également une performance exceptionnelle dans l'étanchéité à l'eau, la perméabilité à l'air et la résistance aux charges de vent.

38 PLUS est également équipé d'un système antigel exclusif (POSITION INFÉRIEURE).

Ce système caché innovant assure le processus anti-condensation sur les panneaux de verre. Ce système favorise également le dégivrage de toutes les formations de glace à l'intérieur du système de gouttières de fenêtres, assurant un drainage amélioré de l'eau, même dans des conditions météorologiques extrêmes.

38 PLUS possède un VERROU HIDDEN HAUTE SECURITE (POSITION DE POIGNÉE).

Une poignée fine et élégante équipée d'un système de verrouillage caché, donne à la fenêtre une apparence simplifiée, conduisant à limiter l'essence minimale, permettant ainsi un niveau de sécurité amélioré, combiné avec une expérience utilisateur intuitive et simple.



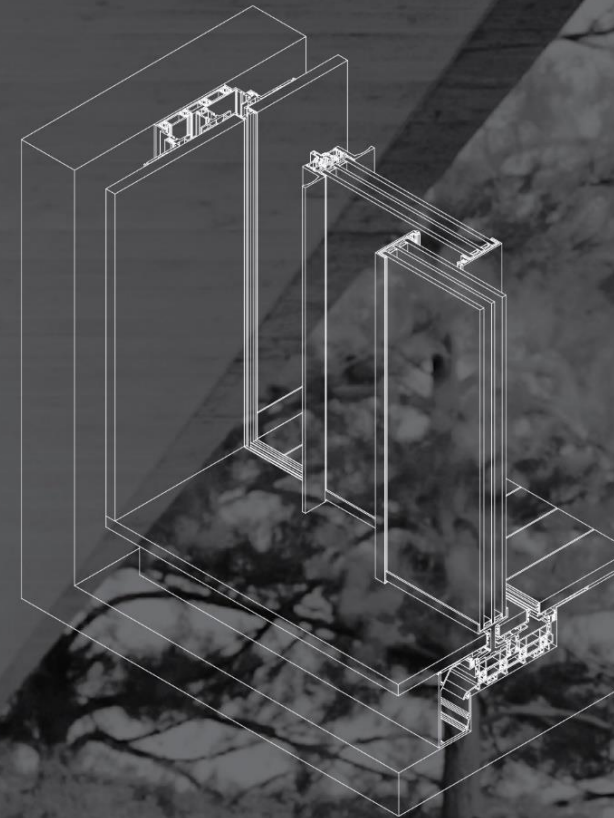
reddot award 2017
winner



GERMAN
DESIGN
AWARD
WINNER
2019



FUSION system



Among 217 candidates, 89 nominees, and 23 awarded products, Much more than a window distinguishes itself by leading the award winning brands on the category Menuiserie & Fermeture. Much more than a Window FUSION SYSTEM is a sliding window system WITHOUT ANY VISIBLE PROFILE.

A system fully integrated on the finishing materials, as if the window had been merged with the building, becoming a whole.

In addition, FUSION SYSTEM INCORPORATES A GUTTER, capable of channeling a large amount of rainwater even in extreme situations.

The system has achieved EXCEPTIONAL RESULTS on leakage tests, with an E1650 class exceptional. (7 classes above class 9A) according to EN + ISO EN 1027. Much more than a Window, as the name says, the brand is an open door to creativity and achievement.

MORE THAN A WINDOW a gagné le trophée de l'innovation de la dernière édition BATIMAT dans la catégorie Menuiserie & fermeture. Cette distinction a été attribuée par un jury rassemblant les plus grand professionnel du secteur. FUSION SYSTEM est un concept de fenêtre coulissante sans profil visible. Un Système dans lequel les matériaux sont entièrement intégrés, comme si la fenêtre avait fusionnée avec le bâtiment. De plus FUSION SYSTEM intègre caniveau, capable de drainer un très grand volume d'eau. Même dans des conditions extrêmes, notre système a obtenu des résultats exceptionnels avec une classe E1650 (7 classes supérieurs à la classe 9A) selon la norme EN + ISO EN 1027. MUCH MORE THAN A WINDOW est une fenêtre ouverte sur la créativité et la réussite.



**GERMAN
DESIGN
AWARD
WINNER
2019**

LIFETIME WARRANTY



APOLICE 203688590/0

MMTW offers a lifetime guarantee, which reflects our confidence in the high quality of our design, engineering, production, durability and performance of our products. Our windows and accessories are manufactured in accordance with the most demanding European quality and safety standards and are free from any defects at the time of installation.

The warranty applies to all continents where our products are sold directly by us or by any authorized business PARTNER.

TERMS AND CONDITIONS

We offer you a lifetime Warranty, subject to the terms of the normal warranty. Our lifetime warranty covers all manufacturing defects.

MMTW offre une Garantie à Vie Volontaire, ce qui reflète notre confiance dans la qualité de notre conception, l'ingénierie, la production, la durabilité et la performance de nos produits. Nos fenêtres et accessoires sont fabriqués selon les normes les plus strictes en matière de sécurité et de qualité européennes en vigueur et sont exempts de tout défaut au moment de l'installation.

Cette garantie MMTW s'applique sur tous les continents où les produits MMTW sont vendus directement par OTIIMA ou un partenaire autorisé commercial.

TERMES ET CONDITIONS

Nous vous offrons une garantie à vie, soumise aux conditions de la garantie standard. Notre Garantie à Vie couvre tous les défauts de fabrication.

by **ECOSTEEL** Metal Systems

**Much
more
than a
Window.**

www.muchmorethanawindow.com | info@muchmorethanawindow.com